




AIRSPACE Atlantis

Aqua Parks



www.airspacesolutions.com



The market leader, providing a
**consultative approach to creating
high-quality fun in the water.**

Welcome To Atlantis

Airspace Solutions are proud to present our Atlantis range of Aqua Park products, for outdoor and indoor use. Airspace have 25+ years of supplying leisure facilities around the world, working with a wide range of operators. Over time, Airspace have developed a unique and un-rivalled product for the Aqua Park market.

The Atlantis range has been developed using our significant industry experience of designing water inflatables and our dedicated team are able to offer a complete turn-key solution, from the initial site survey through to producing a 3D presentation and ultimately manufacturing your bespoke Aqua Park that's specific to your operation.

Our individual Atlantis modules are supported by an independent expert testing organisation, who have carried out significant testing, confirming Airspace are manufacturing the safest and strongest product available on the market.

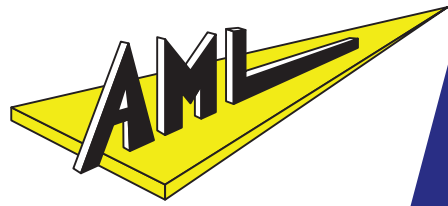
Working closely with the industry standard committees and Government safety bodies, our products are designed and manufactured to ensure compliance with EN25649 and any other applicable parts or standards as required.

We look forward to working with you on your Atlantis project.



Atlantis

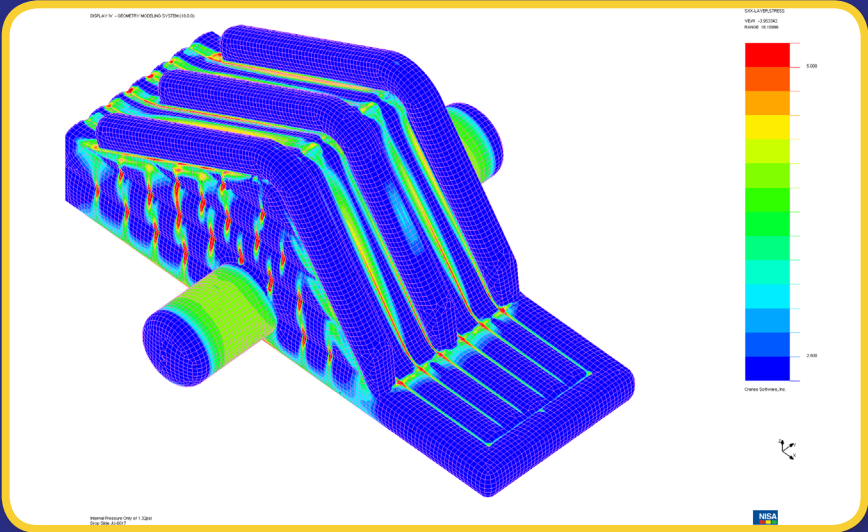
+44 (0) 1495 711 221
sales@airspace-solutions.com
www.airspace-solutions.com



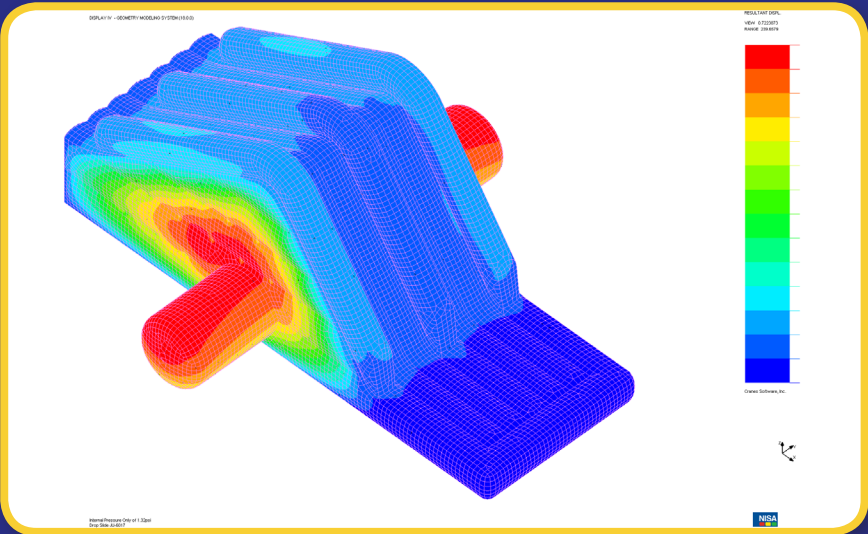
Airspace are a global leader and innovator, taking safety and quality as a priority.

Airspace are proud to be working with AML on extensive scientific analysis on our Atlantis range. As the 'go-to' company for the UK Health and Safety Executive (HSE), Virgin Balloons and Lindstrand Technologies, AML's reputation and expertise is unparalleled.

As safety requirements develop, Airspace are keen to be at the forefront of the industry and to help develop safer practices and products for our Clients.

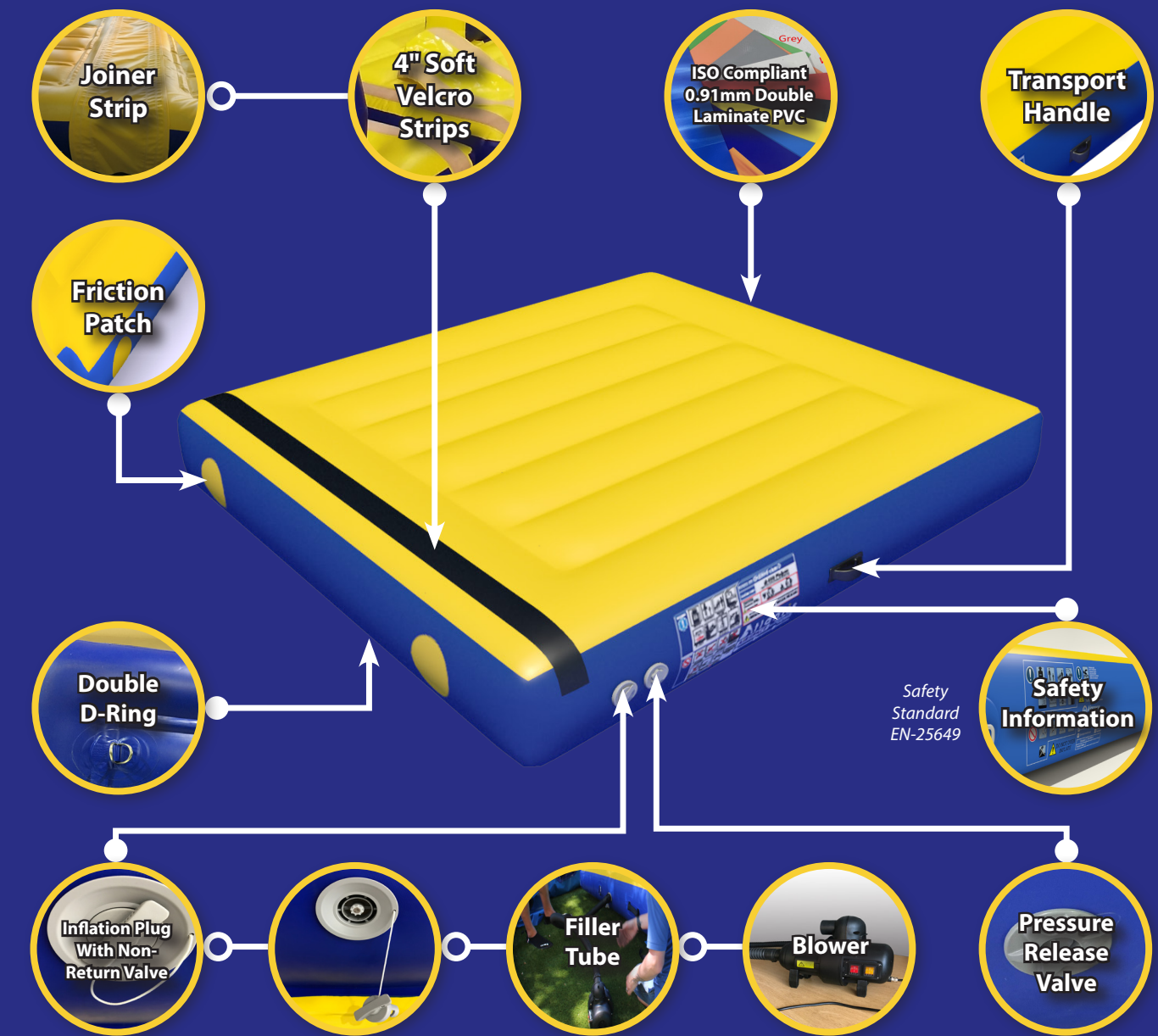


DropSlide FEA Mesh Test
Full Model with all internal pressures, SXX Stresses and Resultant Displacement.



DropSlide FEA Mesh Test
Full Model with all internal pressures and resultant displacement.

Standard Features Of An Atlantis Module.

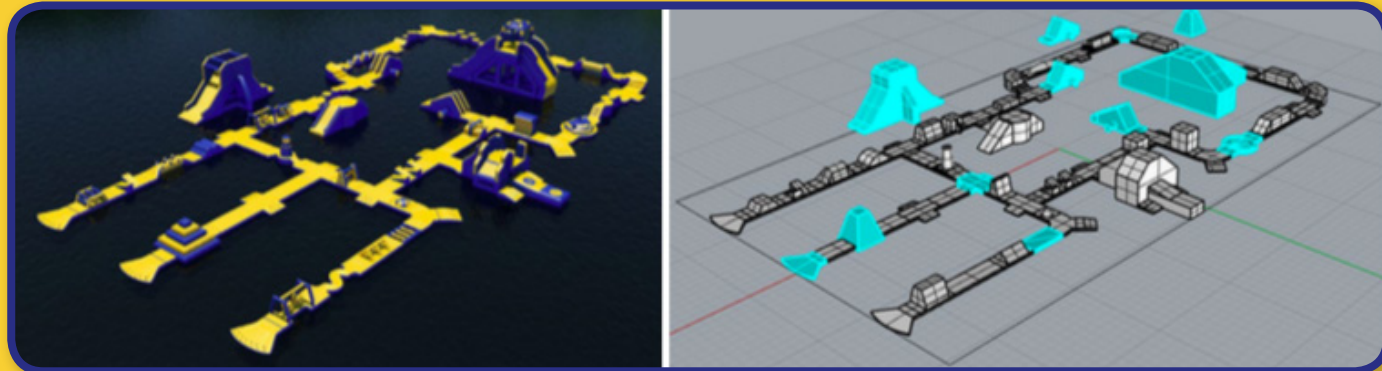


AIRSPACE
Atlantis

Advanced Testing Overview

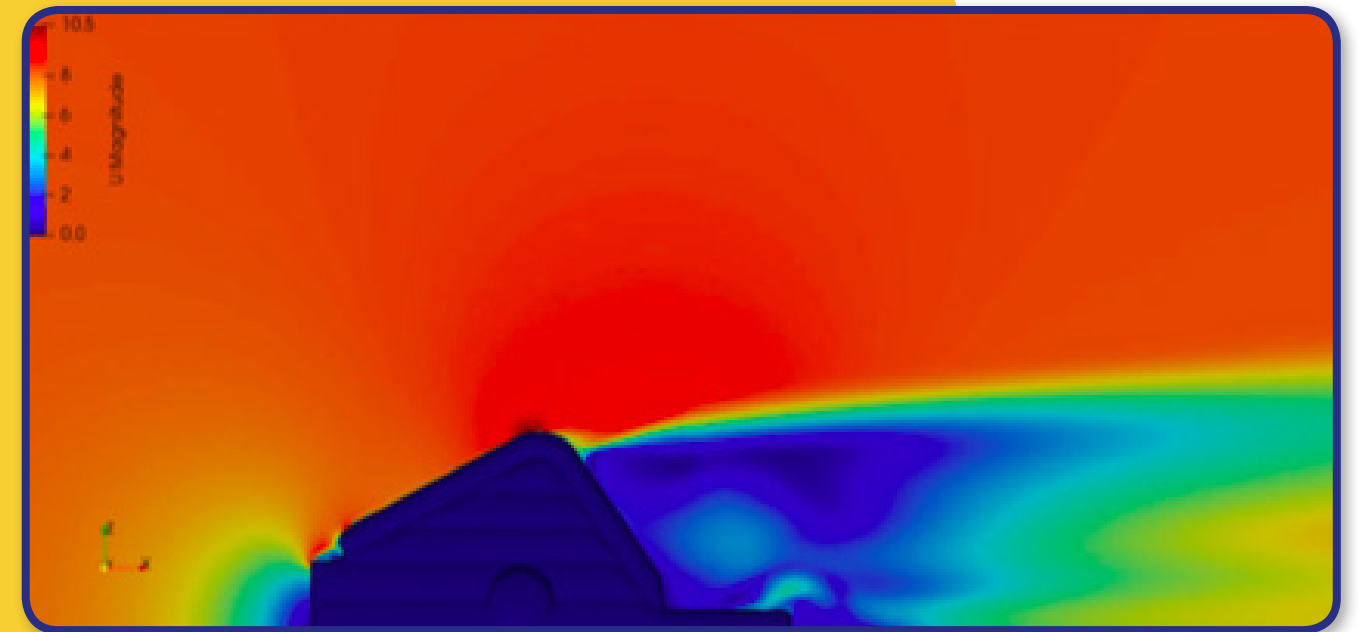
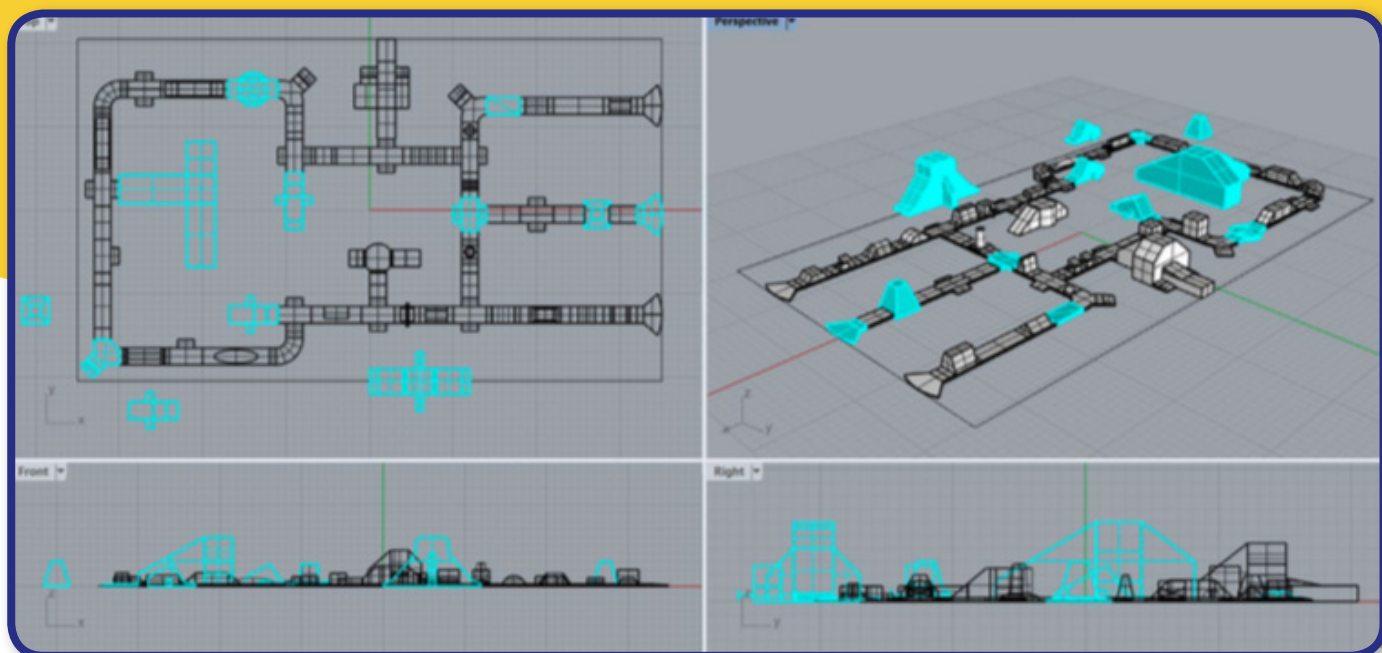
At Airspace Solutions, we exceed what is required from a safety standard. We do this so that we can provide the Customer with the satisfaction that their equipment has gone through the most rigorous testing available, providing a high level of confidence.

By testing beyond the required standards, using AML's advanced testing methods, we provide the highest level of assurance to the end user. This is significantly more advanced than any other method of testing.



Artistic representation of the Water Park and the model of geometrical primitives.

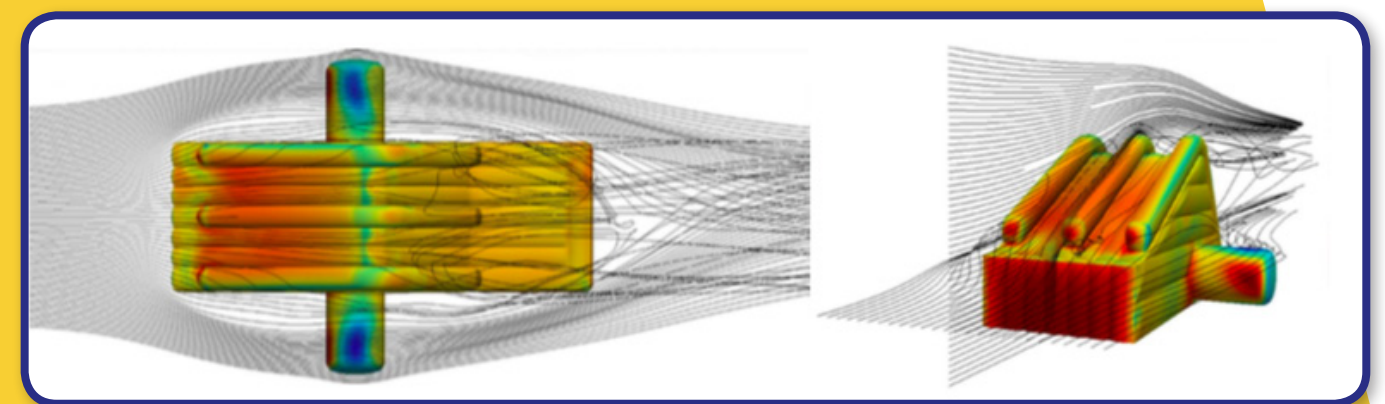
The above shows the artistic representation of the Water Park and the model of geometric primitives side-by-side in similar points of view, where key elements have been marked in blue for a local force analysis, i.e. this CFD model is capable of showing the wind loads of all elements together and the local forces of the elements in blue. This is important to assess how relevant each type of element is for total loads.



Artistic representation of the Water Park and the model of geometrical primitives.

The above shows the distribution of velocities around the Drop Slide with the wind at 0 degrees. It is important to note in this picture that there is a stagnation region in the front part of the model (small blue region in the left), a suction region on the top of the model (dark red on top of the model) and a wake in the downstream of the model (large blue in the right). The stagnation region is a high-pressure region responsible for most of the drag.

The suction region is a low-pressure region responsible for most of the lift. The wake contains turbulence and it produces medium to low pressures, which is also responsible for the drag. Figure 17 shows how these effects occur.



Streamlines around the Drop Slide showing the pattern of airflow.

The diagram above shows the streamlines around the Drop Slide. It is important to note that there is a laminar flow in the upstream of the model (where the lines are parallel), turbulent flow in the wake at the downstream of the model (where the lines are chaotic). This is the typical flow pattern of a blunt body.

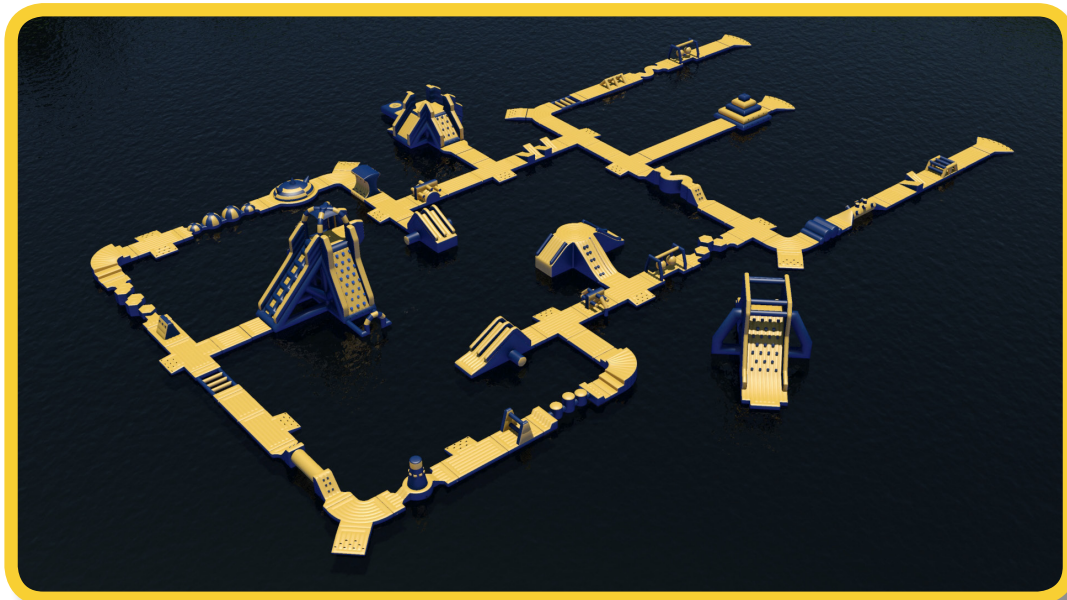






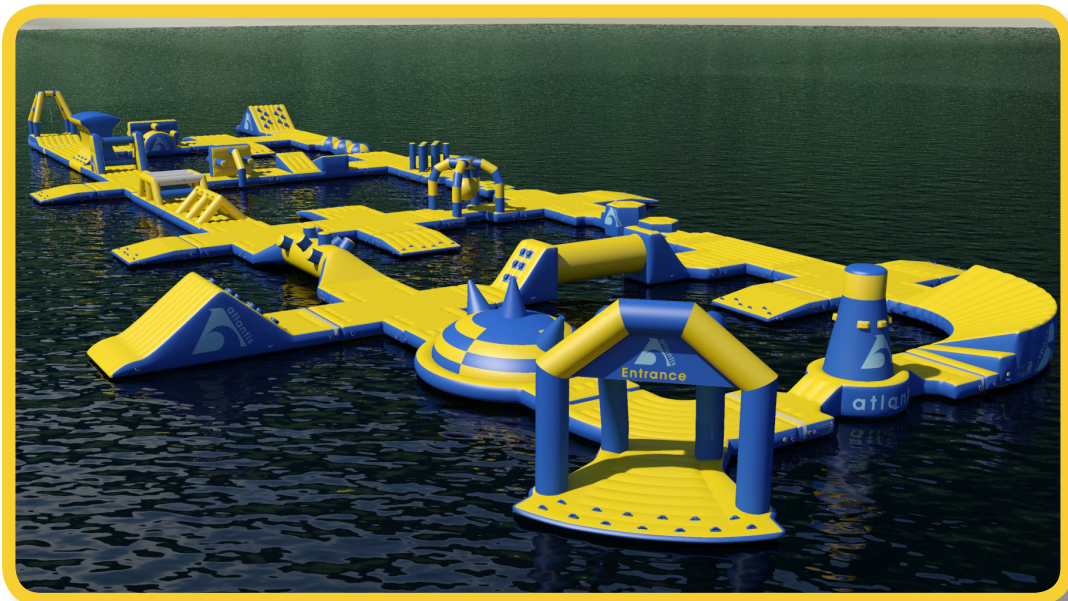
Aqua Action

75m x 35m x 8.3m
166 Users, 50 Modules



Cotswold Water Parks

70m x 41m x 8.3m
212 Users, 58 Modules



Center Parcs

50m x 22m x 3.2m
85 Users, 42 Modules



AquaPark Group

51m x 46m x 8.3m
125 Users, 28 Modules

Project Showcase

National Diving Centre,
Chepstow, UK.



Project Showcase

Cotswold Park and Beach,
Gloucestershire, UK.



Project Showcase

Aquapark Group,
Lakeside, UK.



Project Showcase

Sheraton Hotel,
Qatar.



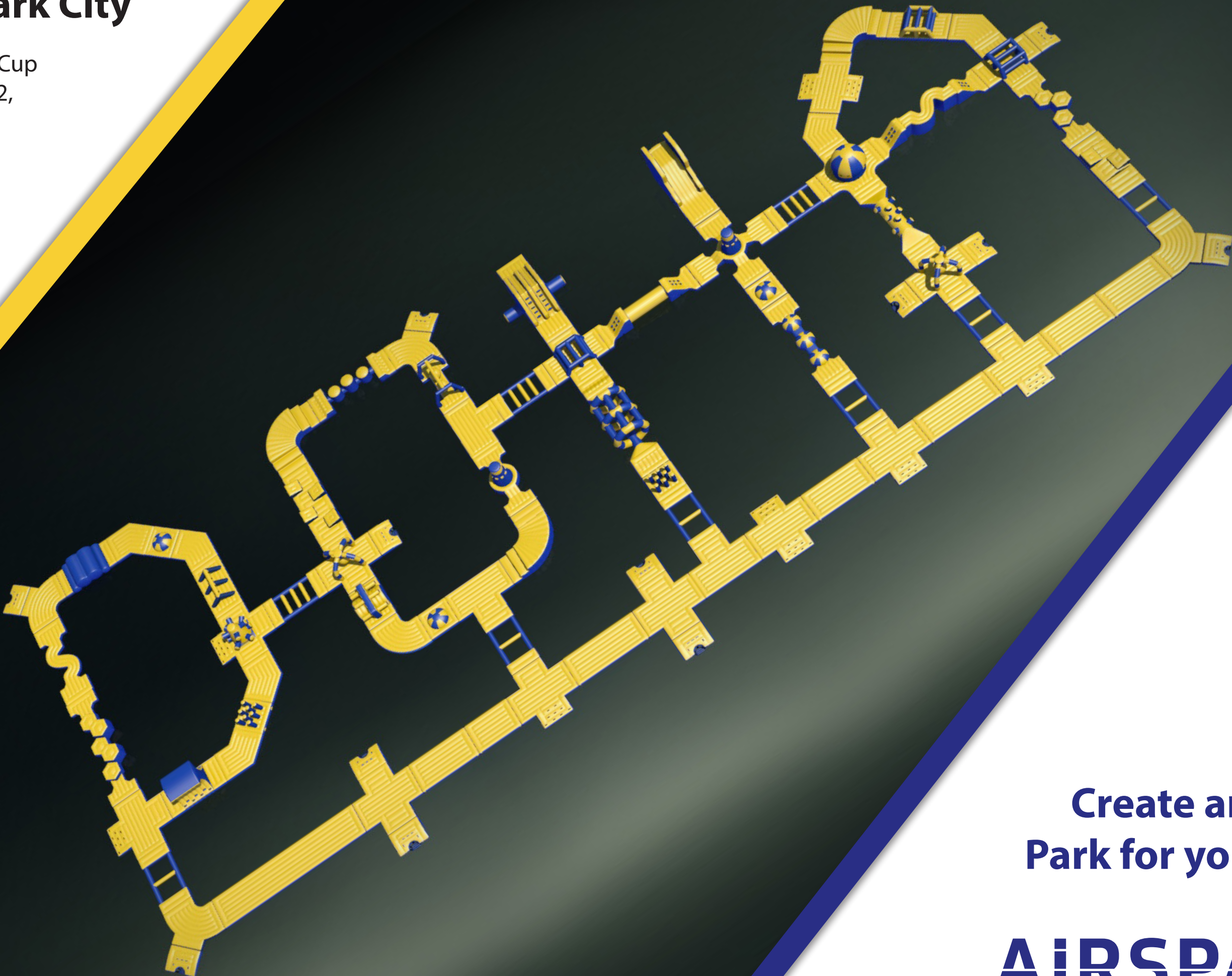
Project Showcase

Center Parcs,
Longleat.



Aqua Park City

Soccer World Cup
Fan Zone 2022,
Doha.



Create an Aqua
Park for your city!

AIRSPACE

Indoor Pools

Atlantis Indoors



Contact our team today to discuss how Atlantis can transform your swimming pool into a fun indoor aqua park. Our modular design can be tailored to create a bespoke inflatable, maximising useable space.

AIRSPACE

Outdoor Swimming Pools

Atlantis Outdoors



As with indoor pools, we can transform your outdoor space into an incredible environment for people to enjoy. We can design setups for all pool shapes/sizes, working to provide as much entertainment as possible in the area you have.

AIRSPACE

Custom Designs

Aqua Action
Essex, UK.

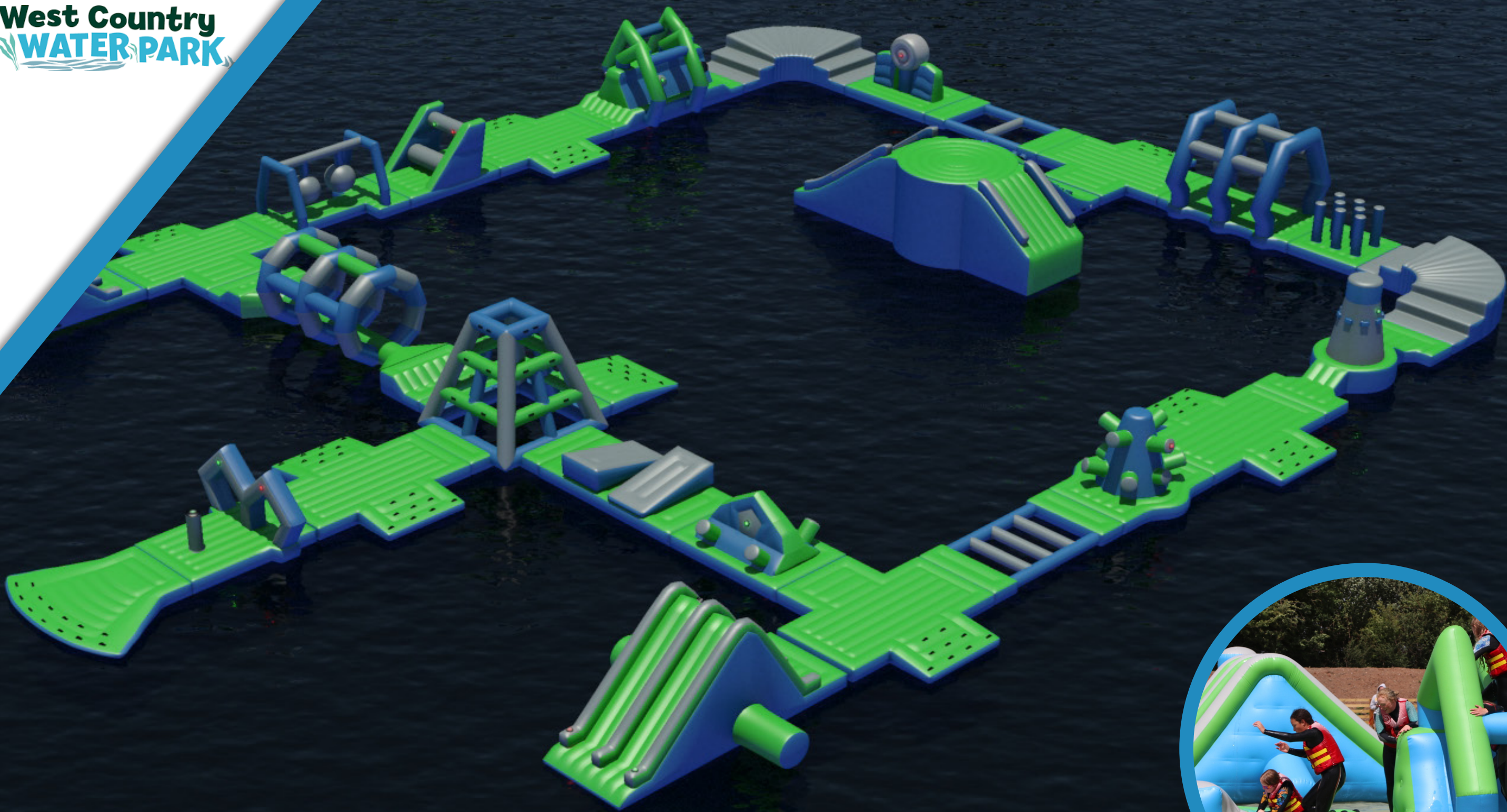


Airspace can offer a solution for a customised installation based on your corporate branding.



Custom Designs

West Country Water Park
Bristol, UK.



Atlantis Service

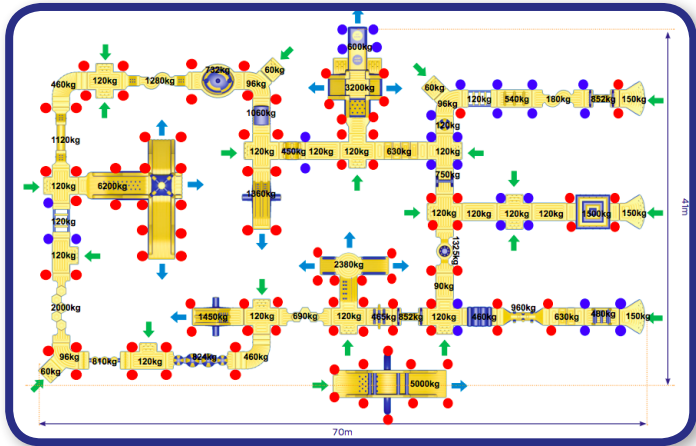
Through our dedicated team, Airspace can provide tailored product support to help your operation.

Speak to our team about how to safely install and operate your Atlantis set up today

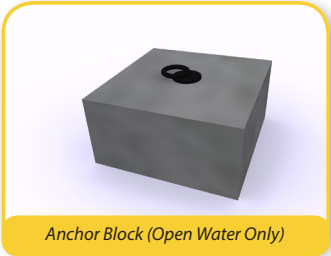


- Anchor weight / site survey
- Installation Guidance
- Delivery to site
- On site product training
- Certificate of conformity relevant to your country of operation.

Client sites are surveyed to ensure the anchors are located in the correct and most effective areas. Opposite, you can see an example anchor plan.



Inflator/Deflater 230V~50Hz 600W



Anchor Block (Open Water Only)



Connection Bungee Cord with Carabiners



Operation Manual



Adjustable webbing strap



Anchor Bungee Cord



Caribeeners



Anemometer



Manometer



Repair Kit



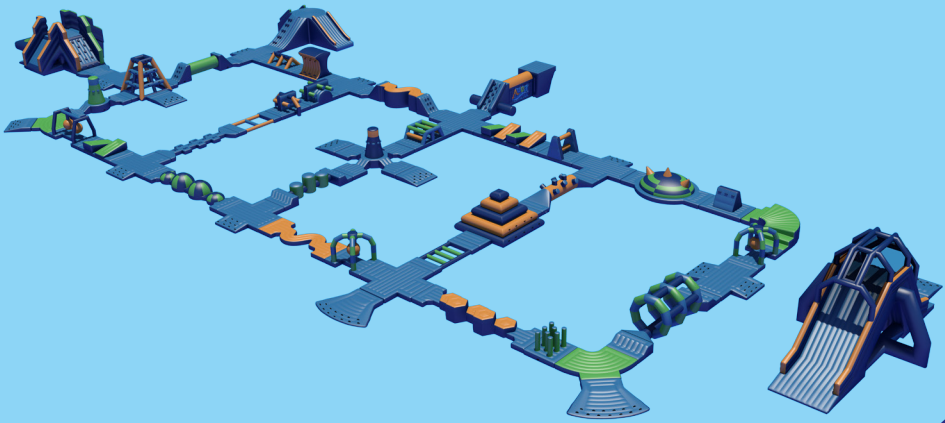
Storage Bag

Atlantis



Rules of Play

- Only competent swimmers are allowed on the inflatable - a swim test may be required.
- Do not enter the inflatable until instructed to do so by a supervisor.
- Do not play in a boisterous manner.
- Do not dive off the inflatable.
- Do not go head first down the slide.
- No hanging or swinging on the tethered ropes.
- No diving OR swimming underneath the inflatable.
- Remove glasses, watches, keys or any other sharp objects before using Atlantis.
- The attendant reserves the right to refuse entry.
- Buoyancy aids must be worn.



PLEASE USE ATLANTIS RESPONSIBLY TO ENSURE YOU DON'T INJURE YOURSELF OR OTHERS

HAVE FUN, PLAY SAFE!

DESIGNED AND ENGINEERED BY
AIRSPACE
+44 (0) 1495 711 221
Facebook: @airspaceweats
Twitter: @airspaceweats
Instagram: @airspaceweats

Atlantis Modules

Platforms

JU-6002 Platform (1 Sided)

2.3m x 2.0m x 0.3m

Number Of Users: 2
Minimum Depth: 1.05m

JU-6025 Platform (2 Sided)

2.5m x 2.0m x 0.3m

Number Of Users: 2
Minimum Depth: 1.05m

JU-6026 Platform (3 Sided)

2.5m x 2.3m x 0.3m

Number Of Users: 2
Minimum Depth: 1.05m

JU-6022 Platform (4 Sided)

2.5m x 2.5m x 0.3m

Number Of Users: 2
Minimum Depth: 1.05m

JU-6058 Platform Plain Bed (3m)

3m x 2m x 0.3m

Number Of Users: 2
Minimum Depth: 1.05m

JU-6059 Platform Plain Bed (4m)

4m x 2.0m x 0.3m

Number Of Users: 4
Minimum Depth: 1.05m

JU-6056 Platform Plain Bed (10m)

10m x 2m x 0.3m

Number Of Users: 6
Minimum Depth: 1.05m

JU-6038 Start Arch

3m x 3.6m x 2.8m

Number Of Users: 4
Minimum Depth: 1.05m

JU-6003 Start Platform

2m x 2m x 0.5m

Number Of Users: 2
Minimum Depth: 1.05m

JU-6079 Wide Ramp

3m x 5m x 0.3m

Number Of Users: 4
Minimum Depth: 1.05m

Corners

JU-6054 Banked Corner

4m x 4m x 1.15m

Number Of Users: 4
Minimum Depth: 1.45m

JU-6004 Corner Platform

3m x 3m x 0.3m

Number Of Users: 2
Minimum Depth: 1.05m

JU-6037 Corner T

3.18m x 3.18m x 0.3m

Number Of Users: 3
Minimum Depth: 1.05m

Junctions

JU-6042 T Junction

4m x 3m x 0.3m

Number Of Users: 3
Minimum Depth: 1.05m

JU-6052 T Junction (1 Ramp)

3m x 4m x 0.3m

Number Of Users: 3
Minimum Depth: 1.05m

JU-6074 X Platform (1 Ramp)

4m x 4m x 0.3m

Number Of Users: 4
Minimum Depth: 1.05m

JU-6053 X Junction (2 Ramp)

4m x 4m x 0.3m

Number Of Users: 4
Minimum Depth: 1.05m

JU-6043 X Junction

4m x 4m x 0.3m

Number Of Users: 4
Minimum Depth: 1.05m

Slides

JU-6014 Challenge Hump & Slide

5.63m x 2.0m x 0.95m

Number Of Users: 4
Minimum Depth: 1.35m

JU-6018 Giant Slide

8m x 3m x 3.8m

Number Of Users: 6
Minimum Depth: 2.4m

JU-6057 Slide

5m x 2m x 1.6m

Number Of Users: 4
Minimum Depth: 1.7m

JU-6049 Tri Climb

10m x 9m x 4.8m

Number Of Users: 6
Minimum Depth: 2.4m

JU-6017 Drop Slide

5.8m x 4.28m x 2.46m

Number Of Users: 4
Minimum Depth: 2m

JU-6064 Side Drop Slide

6.5m x 8.5m x 2.78m

Number Of Users: 6
Minimum Depth: 2.15m

JU-6016 Splash Slide

6.8m x 4.28m x 2m

Number Of Users: 4
Minimum Depth: 1.9m

JU-6068 4m Slide

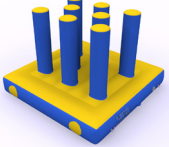
12m x 7m x 6.8m

Number Of Users: 8
Minimum Depth: 2.9m

Atlantis Modules

2m Platforms


JU-6035 Basher Pad



2.0m x 2.0m x 1.3m

Number Of Users: 2
Minimum Depth: 1.05m

JU-6034 Bubble Pad

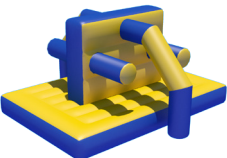


2.0m x 2.0m x 0.9m

Number Of Users: 2
Minimum Depth: 1.35m

3m Platforms

JU-6001 Basher Wall



3.0m x 2.0m x 1.5m

Number Of Users: 2
Minimum Depth: 1.05m

JU-6005 Demolition



3.0m x 2.0m x 2.25m

Number Of Users: 2
Minimum Depth: 1.05m

JU-6023 Cage (Closed Bed)



4.0m x 2.0m x 1.16m

Number Of Users: 2
Minimum Depth: 1.50m

JU-6011 Cage (Open Bed)



4.0m x 2.0m x 1.5m

Number Of Users: 2
Minimum Depth: 1.50m

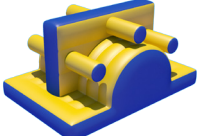
JU-6008 Wipe Out Wall



3.0m x 2.0m x 1.65m

Number Of Users: 2
Minimum Depth: 1.05m

JU-6012 Hump



3.0m x 2.0m x 1.55m

Number Of Users: 2
Minimum Depth: 1.25m

JU-6039 Cliff Hanger



4.0m x 2.0m x 2.65m

Number Of Users: 4
Minimum Depth: 1.15m

JU-6047 Climbing Tower



4.0m x 4.0m x 3.15m

Number Of Users: 4
Minimum Depth: 2.40m

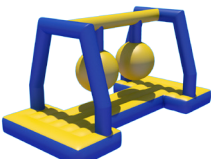
JU-6007 Mangle



3.0m x 2.0m x 2.15m

Number Of Users: 2
Minimum Depth: 1.05m

JU-6013 Double Demolition



4.0m x 2.0m x 2.13m

Number Of Users: 2
Minimum Depth: 1.05m

JU-6040 Half Ladder

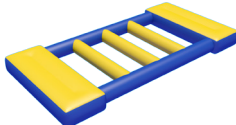


4.0m x 2.0m x 0.3m

Number Of Users: 2
Minimum Depth: 1.05m

4m Platforms

JU-6029 Ladder



4.0m x 2.0m x 0.30m

Number Of Users: 2
Minimum Depth: 1.05m

JU-6041 Rollers



4.0m x 2.0m x 1.15m

Number Of Users: 2
Minimum Depth: 1.40m

JU-6006 Tri-Beam (Open Bed)



4.0m x 2.0m x 1.35m

Number Of Users: 2
Minimum Depth: 1.05m

JU-6019 Slip Away



4.0m x 2.0m x 1.05m

Number Of Users: 2
Minimum Depth: 1.45m

JU-6024 Tri-Beam (Closed Bed)



4.0m x 2.0m x 1.35m

Number Of Users: 2
Minimum Depth: 1.05m

5m Platforms


JU-6027 Lighthouse



5.0m x 2.0m x 2.65m

Number Of Users: 3
Minimum Depth: 1.20m

JU-6081 Splashdown

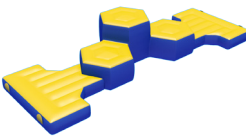


6.96m x 2.0m x 3.35m

Number Of Users: 4
Minimum Depth: 1.9m

Jump Platforms


JU-6028 Giants Causeway



6.0m x 2.0m x 1.15m

Number Of Users: 3
Minimum Depth: 1.45m

JU-6045 Hopscotch



6.0m x 2.0m x 1.3m

Number Of Users: 3
Minimum Depth: 1.05m


JU-6032 Log



6.0m x 2.0m x 1.60m

Number Of Users: 3
Minimum Depth: 1.70m

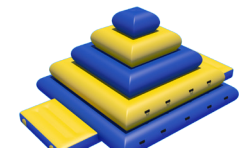
JU-6020 S-Bend



6.0m x 2.0m x 0.3m

Number Of Users: 3
Minimum Depth: 1.05m

JU-6031 Stack



6.0m x 4.0m x 2.50m

Number Of Users: 6
Minimum Depth: 2.20m

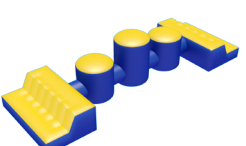
JU-6060 Slip Away (6m)



6.0m x 2.0m x 1.05m

Number Of Users: 4
Minimum Depth: 1.45m


JU-6065 Stepping Stones



6.0m x 2.0m x 1.35m

Number Of Users: 3
Minimum Depth: 1.55m

JU-6044 Super Dome



6.0m x 4.0m x 1.22m

Number Of Users: 4
Minimum Depth: 1.25m

Atlantis Modules

6m Platforms

JU-6046 Balance Beam (6m)

A yellow and blue balance beam with a central pivot and two platforms.

6.0m x 2.0m x 1.60m

Number Of Users: 3
Minimum Depth: 1.7m

JU-6066 Lighthouse X

A yellow and blue lighthouse-shaped platform with a central tower and four arms.

6.0m x 6.0m x 2.65m

Number Of Users: 4
Minimum Depth: 1.2m

JU-6070 Punch Ball

A yellow and blue platform with a central punching ball and two arms.

6.0m x 3.0m x 4.15m

Number Of Users: 1
Minimum Depth: 1.30m

JU-6033 Swing

A yellow and blue swing set with two seats and a central frame.

4.0m x 2.0m x 3.14m

Number Of Users: 2
Minimum Depth: 1.50m

X Platforms

JU-6086 X Tube Cage

A yellow and blue X-shaped platform with a central tube cage.

4.0m x 4.0m x 1.50m

Number Of Users: 4
Minimum Depth: 1.50m

JU-6092 X Wooden Man (1 Ramp)

A yellow and blue X-shaped platform with a central wooden man figure and one ramp.

4.0m x 4.0m x 2.00m

Number Of Users: 4
Minimum Depth: 1.05m

JU-6088 X Demolition

A yellow and blue X-shaped platform with a central demolition structure.

4.0m x 4.0m x 2.20m

Number Of Users: 4
Minimum Depth: 1.05m

JU-6089 X Demolition (2 Ramps)

A yellow and blue X-shaped platform with a central demolition structure and two ramps.

4.0m x 4.0m x 2.20m

Number Of Users: 4
Minimum Depth: 1.05m

7m Platforms

JU-6021 Bubbles

A yellow and blue platform with a central bubble structure.

7.0m x 2.0m x 0.8m

Number Of Users: 3
Minimum Depth: 1.25m

JU-6082 Balance Beam (7m)

A yellow and blue balance beam with a central pivot and two platforms.

7.0m x 2.0m x 1.6m

Number Of Users: 3
Minimum Depth: 1.70m

JU-6073 Boom (3m)

A yellow and blue boom structure.

3.0m x 0.4m x 0.4m

Number Of Users: n/a
Minimum Depth: n/a

JU-6073 Boom (10m)

A yellow and blue boom structure.

10.0m x 0.4m x 0.4m

Number Of Users: n/a
Minimum Depth: n/a

Booms

JU-6090 X Bubbles

A yellow and blue X-shaped platform with a central bubble structure.

4.0m x 4.0m x 0.90m

Number Of Users: 4
Minimum Depth: 1.35m

JU-6091 X Climbing Ball

A yellow and blue X-shaped platform with a central climbing ball.

4.0m x 4.0m x 2.30m

Number Of Users: 4
Minimum Depth: 1.05m

8m Platforms

JU-6063 Big Bubbles

A yellow and blue platform with a central big bubble structure.

8.0m x 2.0m x 1.02m

Number Of Users: 4
Minimum Depth: 1.40m

JU-6061 Giants Causeway (8m)

A yellow and blue platform with a central giants causeway structure.

8.0m x 2.0m x 1.15m

Number Of Users: 5
Minimum Depth: 1.45m

JU-6076 Jeopardy

A yellow and blue platform with a central jeopardy structure.

8.0m x 3.44m x 1.95m

Number Of Users: 4
Minimum Depth: 1.90m

JU-6077 Mammoth

A yellow and blue platform with a central mammoth structure.

12.5m x 15.0m x 8.26m

Number Of Users: 12
Minimum Depth: 3.50m

Large Units

JU-6067 High-S

A yellow and blue platform with a central high-s structure.

8.0m x 2.0m x 1.6m

Number Of Users: 4
Minimum Depth: 1.70m

JU-6062 Tube Tunnel

A yellow and blue platform with a central tube tunnel structure.

8.0m x 2.5m x 2.5m

Number Of Users: 4
Minimum Depth: 1.15m

JU-6075 Tornado

A yellow and blue platform with a central tornado structure.

12m x 6.5m x 4.4m

Number Of Users: 7
Minimum Depth: 2.2m

Easy Steps

JU-6093 T-Corner With Step

A yellow and blue T-shaped platform with a central step.

3.2m x 3.2m x 0.30m

Number Of Users: 3
Minimum Depth: 1.05m

JU-6094 X-Junction (2 Steps)

A yellow and blue X-shaped platform with a central junction and two steps.

3.0m x 4.0m x 0.30m

Number Of Users: 3
Minimum Depth: 1.05m

JU-6095 T-Junction (1 Step)

A yellow and blue T-shaped platform with a central junction and one step.

3.0m x 3.0m x 0.30m

Number Of Users: 2
Minimum Depth: 1.05m

JU-6096 Easy Step

A yellow and blue platform with a central easy step structure.

2.0m x 2.0m x 0.30m

Number Of Users: 1
Minimum Depth: 1.05m

JU-6097 Easy Step (x3)

A yellow and blue platform with a central easy step structure (x3).

3.0m x 5.0m x 0.30m

Number Of Users: 3
Minimum Depth: 1.05m

AIRSPACE

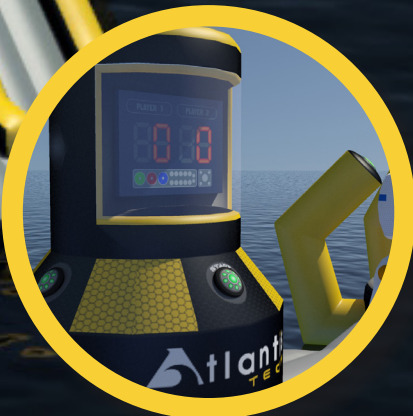
The World's only interactive Aqua Park.



Atlantis Tech is the evolution of our Atlantis range. Wireless light pods are attached onto the modules to add an extra level of challenges and fun.

Games are played by striking wireless electronic pods located throughout the inflatable setup. Once activated the pods transmit to a scoreboard to keep score. The pods are fully rechargeable and are secured in water proof pockets that allow operators to conveniently remove for charging.

No Wires!
100% Waterproof!



Indoor Pools

Atlantis Tech Indoors



Moorways
Sports Village

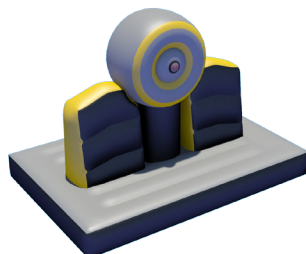


Contact our team today to discuss how Atlantis can transform your swimming pool into a fun indoor aqua park. Our modular design can be tailored to create a bespoke inflatable, maximising useable space.

AIRSPACE

Atlantis Tech Modules

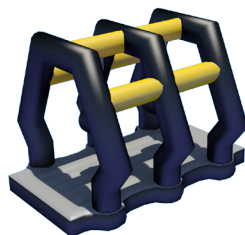
AT-0005 Battle Gong



3.0m x 2.0m x 3.14m

Number Of Users: 2
Minimum Depth: 1.05m

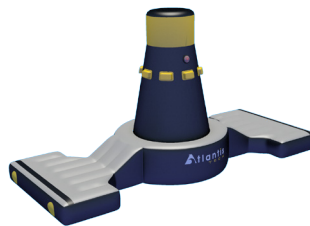
AT-0006 Hammer Time



4.0m x 2.6m x 2.8m

Number Of Users: 2
Minimum Depth: 1.05m

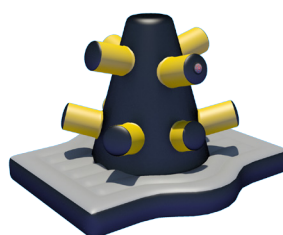
AT-0008 Lighthouse



5.0m x 2.0m x 2.5m

Number Of Users: 3
Minimum Depth: 1.50m

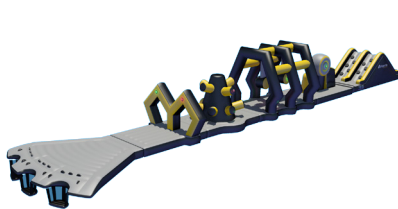
AT-0017 Wooden Man



3.0m x 2.6m x 2.0m

Number Of Users: 2
Minimum Depth: 1.05m

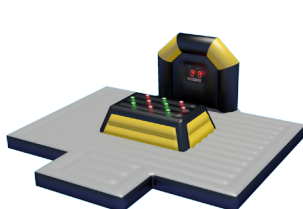
Aqua Run



21m x 2.0m x 2.0m

Number Of Users: 2
Minimum Depth: 1.05m

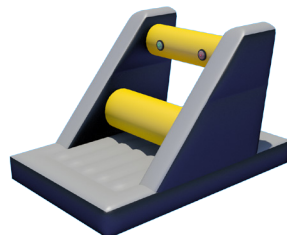
AT-0020 Table Top



3.0m x 4.0m x 2.4m

Number Of Users: 4
Minimum Depth: 1.05m

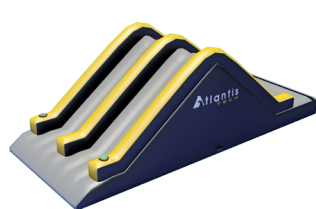
AT-0009 Mangle



3.0m x 2.0m x 1.8m

Number Of Users: 2
Minimum Depth: 1.05m

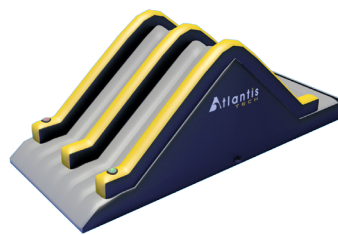
AT-0011 Slide (1.5m)



5.0m x 2.0m x 1.8m

Number Of Users: 4
Minimum Depth: 1.70m

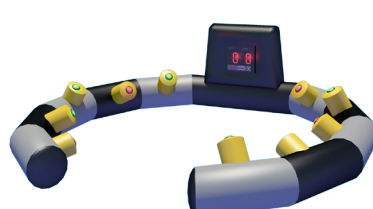
AT-0012 Slide (2.5m)



6.0m x 2.0m x 2.8m

Number Of Users: 4
Minimum Depth: 2.30m

AT-0023 Floating Reaction



2.0m x 3.0m x 1.2m

Number Of Users: 2
Minimum Depth: 1.05m

AT-0021 Back 2 Base



6.0m x 6.0m x 3.5m

Number Of Users: 4
Minimum Depth: 1.05m

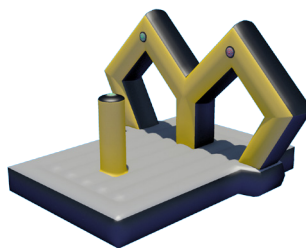
AT-0015 Trailblazer



11m x 5.0m x 3.0m

Number Of Users: 11
Minimum Depth: 1.05m

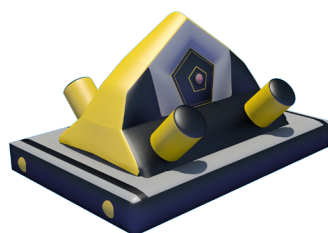
AT-0013 Start Arches



3.0m x 2.0m x 2.0m

Number Of Users: 2
Minimum Depth: 1.05m

AT-0014 Target Wall



3.0m x 2.0m x 1.5m

Number Of Users: 2
Minimum Depth: 1.05m

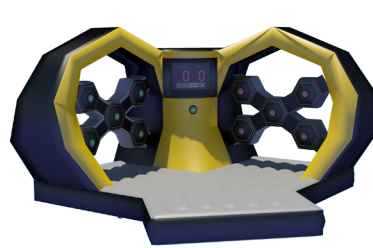
AT-0016 Tubular Hell



5.0m x 2.0m x 2.8m

Number Of Users: 4
Minimum Depth: 1.20m

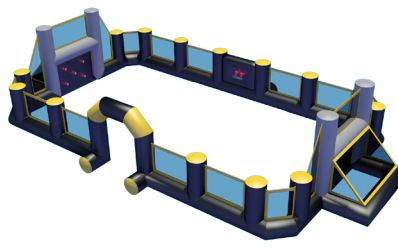
AT-0010 Reaction



4.0m x 4.8m x 2.5m

Number Of Users: 4
Minimum Depth: 1.05m

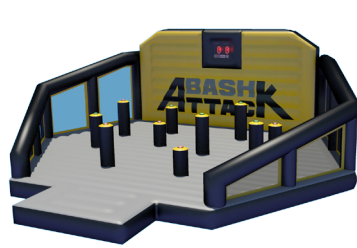
AT-0021 Sports Arena



10m x 6.0m x 3.0m

Number Of Users: 10
Minimum Depth: 1.05m

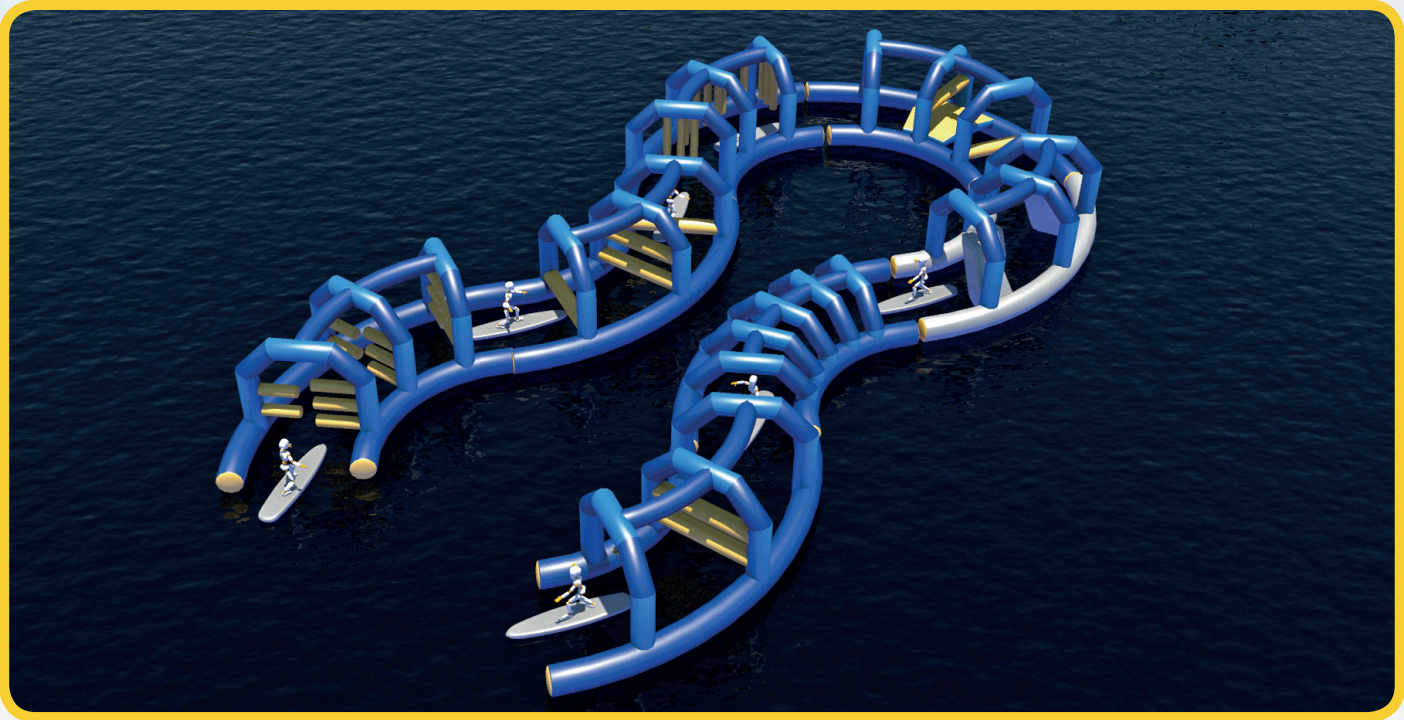
AT-0022 Bash Attack



4.0m x 6.0m x 2.5m

Number Of Users: 4
Minimum Depth: 1.05m

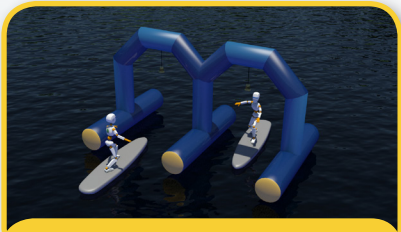
Paddleboard Assault Course



PBAC

Paddleboard Assault Course

Straight Modules



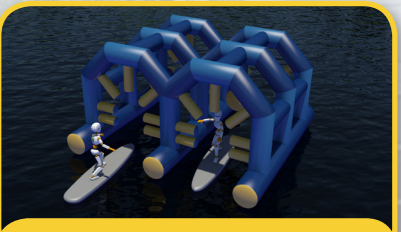
Start/Finish Arches



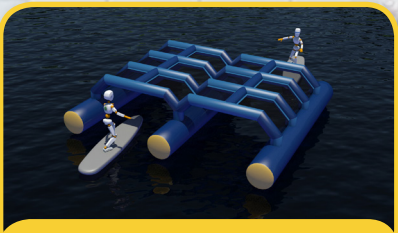
Hurdles



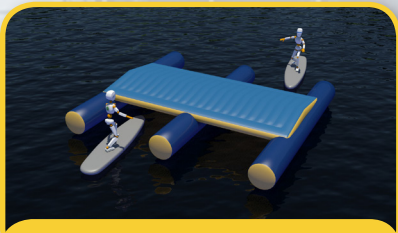
Slalom Bashers



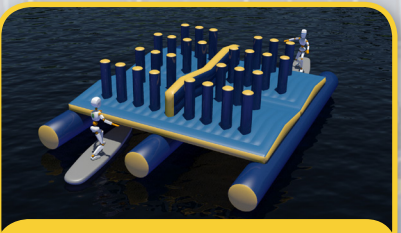
Basher Cages



Tunnel



Up and Over

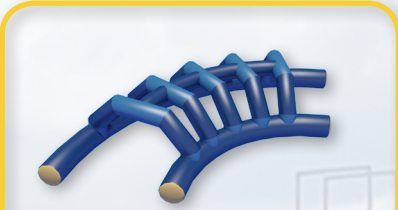


Up and Over Basher

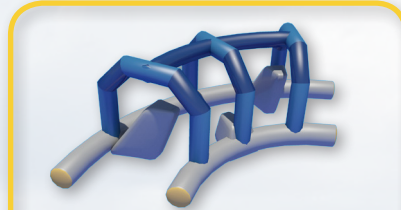
PBAC

Paddleboard Assault Course

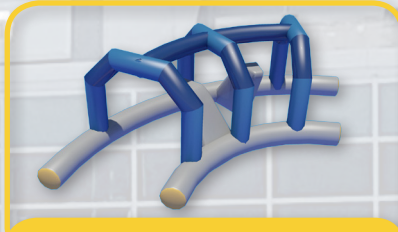
Slalom Modules



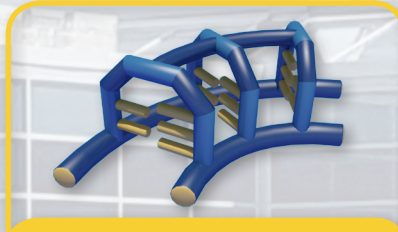
Low Cage



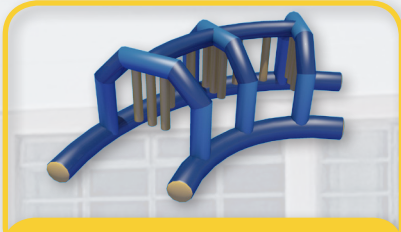
Rocky Rapids A



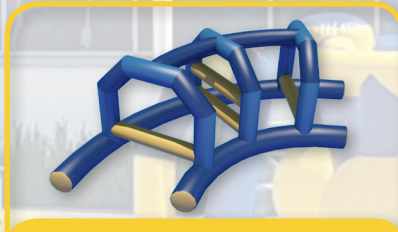
Rocky Rapids B



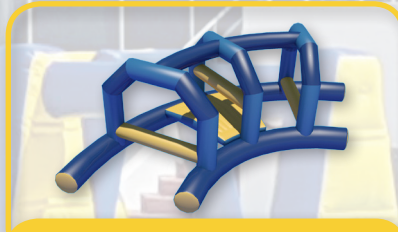
Side Bashers



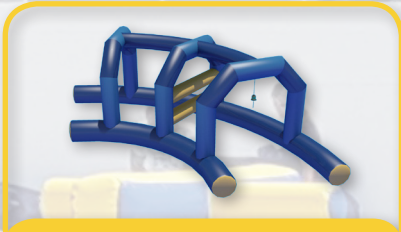
Hanging Bashers



Tube Cage



Up and Over



Start/Finish Arch

AIRSPACE

+44 (0) 1495 711 221

sales@airspacesolutions.com

www.airspacesolutions.com



Find us on
Facebook



@airspacetweets



@airspacesolutions



Airspace Solutions

Registration in England & Wales No : 5340047

Registered office address: Unit 17, Tafarnaubach Ind Est, Tredegar Blaenau, Gwent, NP22 3AA, UK.